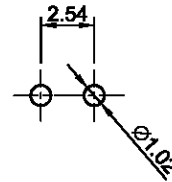
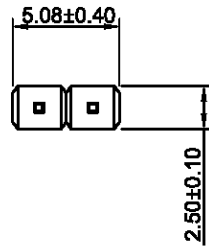


REV.	ECN.	DATE	DWN	APVD



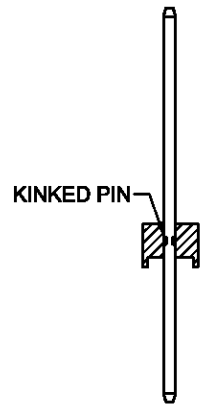
RECOMMENDED P.C.B LAYOUT:±0.1mm

**MATERIAL:**

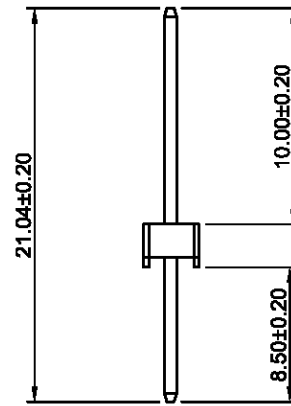
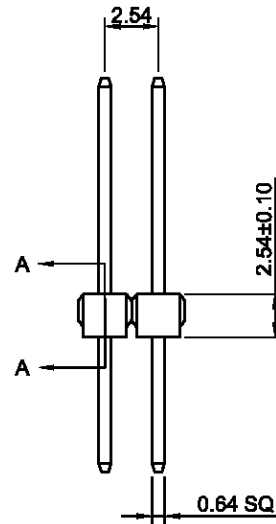
INSULATOR : LCP, UL 94V-0.  
 CONTACT : COPPER ALLOY.  
 CONTACT FINISH : TIN PLATED.

**SPECIFICATION:**

CURRENT RATING : 3 AMP.  
 DIELECTRIC WITHSTANDING VOLTAGE : 1000V AC FOR 1 MINUTE.  
 INSULATION RESISTANCE : 1000MΩ MIN. AT 500V DC.  
 CONTACT RESISTANCE : 20mΩ MAX.  
 OPERATING TEMPERATURE : -55°C ~ +105°C.



SECTION A-A



PIN TAIL LENGTH		
CODE	A	B
XX	10.00	8.50

UNIT	mm	Projection		Secom International Enterprise Co., Ltd.			
TOLERANCES				TITLE			
x. = ±            Angle = ± 5° .x = ± 0.38 .xx = ± 0.25				2.54mm pitch Pin header straight type			
DRAWN	Kevin	DATE	2009/11/10	PART NO.	SPS-2514M-202T		
SCALE	1:1	SIZE	A4	SHEET	1/1	REV	A1