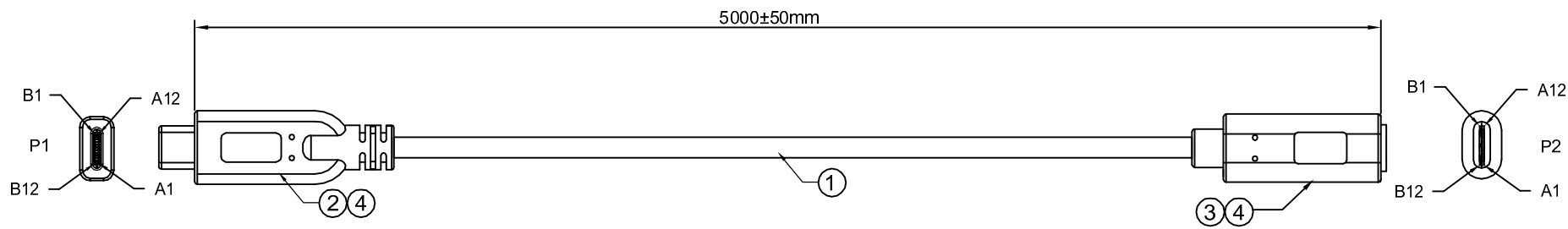
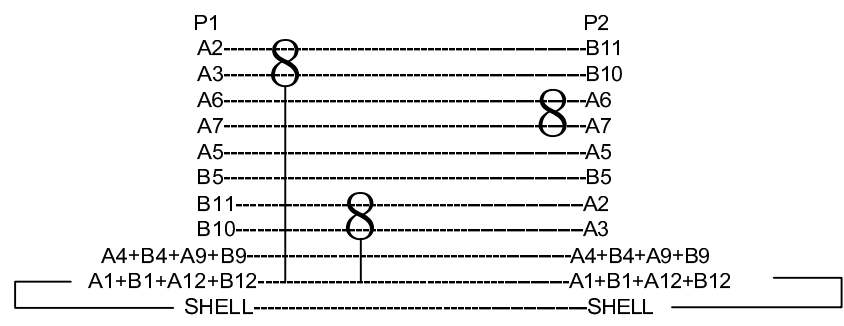


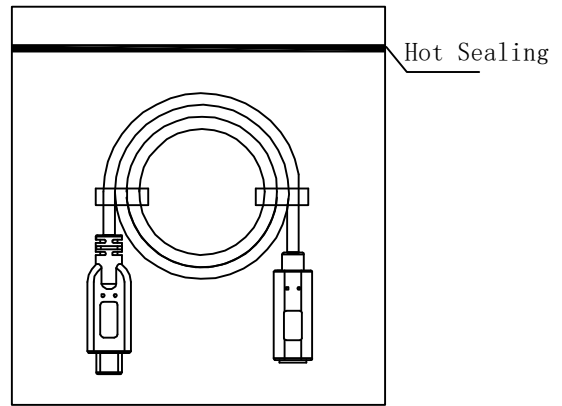
型号	模号	版本	變更內容	日期	制圖	審核
		REV.	DESCRIPTION	DATE	DR.	APPD



**PIN ASSIGNMENT**



PACKING : 1PCS / BAG



**NOTES:**  
 1. PIN ASSIGNMENT SEE TO WIRE LIST.  
 2. ELECTRICAL TEST CONDITION:  
 (a). 100%OPEN,SHORT & MISWIRE TEST,  
 (b). INSULATOR RESISTANCE:10 Mohm MIN.  
 DC 300V 0.01sec.  
 (c). CONTACT RESISTANCE:3ohm MAX.

**PART LIST: ALL "ROHS" COMPLIANT, ALL MATERIALS ARE EQUIVALENT.**

4	OVERMOLD ORANGE TPE 100A.		
3	USB3.1 C TYPE FEMALE BLACK INSULATOR WITH NICKLE PLATED SHELL.		Kg/1K
2	USB3.1 C TYPE MALE BLACK INSULATOR WITH NICKLE PLATED SHELL.	1	SET
1	(26AWG*1C+EAM)*2+28AWG*1P+28AWG*2C+24#*1C+EA OD:5.5MM L:5000mm ORANGE TPE JACKET .	1	SET
ITEM	STANDARD SPECIFICATION	Q' TY	UNIT

**Seconn International Enterprise Co., Ltd.**

TOLERANCES		PROJECTION	TITLE			
AS DRAWING			Type C Male to Female Cable Orange TPE Jacket			
		UNIT mm				
DRAWN	Diana	DATE	2023/08/19	PART NO.	SC-S-2308-1901	
SCALE	X:1	SIZE	A4	SHEET	1/1	REV A